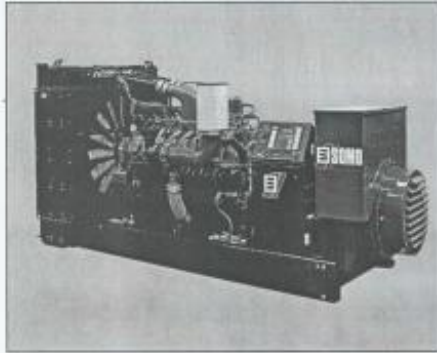


1000KW / 1250KVA
Stand-by Power @ 60Hz



Standard Features :

- Engine, electric starter, charge alternator 24V , Isoch. Gov.
- Single bearing alternator IP21, insulation class H/H
- Radiator 50°C (122°F) max. T° air inlet with coolant cap
- Skid and vibration isolators
- Dry type air filter
- Flexible
- User manual

- We provide a full line of products with high quality recognized engines and alternators.
- Microprocessor Digital Control Panel is equipped as standard on all models. Options are available which meet most applications.
- Electronic governor MDEC is available on all models from the XS range
- Each and every units is factory tested. All generator sets are also prototype tested.
- A one year limited warranty covers all systems and components. Two and five years extended are also available.
- Service and parts are available from our distributors as a single source of responsibility

GENERATOR RATINGS

Voltage	Hz	Phase	P.F	Standby Amps	Standby Ratings KW/KVA	Prime Ratings KW/KVA
480/277V	60	3	0.8	1504	1000 / 1250	X
440/254V	60	3	0.8	1640	1000 / 1250	X

Stand-By ratings are continuous for the duration of any power outage. No overload capacity is specified at this ratings. Prime ratings are continuous per BS 5514, DIN 6271, ISO-3046 and IEC 34-1 with 10% overload capacity one hour in twelve hours.